

PLAYBILL

THE ART CENTRE THEATRE



Directed by Sam Baker



May 31st-June 16, 2024
The Art Centre Theatre, Plano, TX
www.artcentretheatre.com

WHO'S WHO



Jorge Romero (Tully/Choreographer) Ladies and gentlemen, my name is Tully, the fun-loving son of a sailor with a passion for musicals, and I've picked up the guitar for the first time in a long time just for this show— so please, go easy on me! I've had the joy of direction productions like “The Addams Family” and “Beauty and the Beast”, even stepping into the spot-



Kayla Bonina (Tammy/Choreographer) is delighted to be back at ACT for her 5th show. As a total Parrot-head and regular concert goer to Jimmy Buffett, this musical has been so fun to put together. She is the Burlesque Director here at ACT and directed Burlesquing through the 90s! You can also catch her this summer in The Little Mermaid at Dallas Theater Center. Kayla would like to thank her family, friends, and amazing boyfriend for always supporting her dreams and coming to see her shows, as well as the amazing performers, tech, and director. PS: Have fun



Byron Frazier (Brick) Midwest transplant who enjoys live theater and music. Byron performs in a mix of musicals and straight plays. Byron is an active board member at ACT and loves his theater family.



Jed Davis (Mac) Jed is excited to be making his debut at ACT. He has been a Parrothead for decades, which makes “Escape to Margaritaville” the perfect place to start. Jed would like to thank the cast and crew for welcoming him so warmly to the ACT family.



Brenda Benavides (Ass. Director/Ensemble) is so grateful to be, for the first time, Assistant Director in this fun musical! You may have seen her as “Mrs. Grizzly” in melodrama Stop The Presses, or as “Clarie” in the live radio production of It’s A Wonderful Life, both also directed by the beloved Sam Baker. She hopes you will enjoy singing along to this!

YOUTH SCHOLARSHIP



ACT has a fund that specifically helps people if they need a discount for their children to participate in ACT's programming.

It can help the price drop for families in need sometimes 90%.

If you're wanting to help children continue or start quality programming here at ACT please stop by our concession stand. Every dollar goes straight into the Youth Scholarship Fund.



ACT's Programs helps Children learn:

- Social Skills
- Team Work
- Public Speaking
- Body Language
- Gain Confidence
- Improvisational Skills
 - Self Awareness
 - Acting Techniques
 - Singing Techniques
 - Dance Techniques
 - And Many More



Subscribe to our ACT Alerts email list; send any mail to alerts@artcentretheatre.com



Follow us on Facebook: www.facebook.com/artcentretheatre

WHO'S WHO



Jordan Fincher-Oliver (Ensemble) Jordan is delighted to spread her wings outside of burlesque at ACT for her musical debut with Margaritaville. You may have seen her as “Reese Withouterspoon” in *Burlesquing Through The 90s*, *Villain’s Burlesque*, and *Cartoon Cabaret*. You can also catch her in the November show: *Ho Ho Holidayz*. She has performed on stages for the majority of the last 25 years. She hopes you all enjoy!

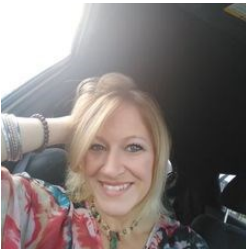


Elisabeth Hassenboehler (Ensemble) has been cruising the stage at ACT since 2016. She is grateful to be dancing and singing alongside this wonderful cast. In her free time, she teaches 3rd grade and eats nachos. Enjoy the show!



Sheri LeNoir (Ensemble)

“We are all of us stars, we all deserve to twinkle.” - Marilyn Monroe



Brandy Harris (Ensemble) Brandy is excited to be gracing the Art Centre Theatre’s stage once more in this production of *Escape to Margaritaville*. Who doesn’t love having *Cheeseburgers in Paradise*? You’ve seen her previously in other ACT works, such as, *Stop The Presses*, *Bride of Frankenstein Goes to Malibu*, and *The Best Little Whorehouse in Texas*. She is happy to have made the ACT her theater family!

ACT members, Individual & Corporate Sponsors help us to keep the stage lights on, while enjoying discounts on ACT tickets and tuitions! Head over to the Web site today to become a member!

Individual Sponsorships

<p>Donation Tier: Opal</p> <p>Donation Amount: \$5 - \$50</p> <p>PERKS : Website Listing (WL)</p> <p>Donate Here</p>	<p>Donation Tier: Emerald</p> <p>Donation Amount: \$51 - \$100</p> <p>PERKS : Website Listing (WL) Program Listing (PL)</p> <p>Donate Here</p>	<p>Donation Tier: Ruby</p> <p>Donation Amount: \$101 - \$500</p> <p>PERKS : Website Listing (WL) Program Listing (PL) Ticket Discount 5%</p> <p>Donate Here</p>	<p>Donation Tier: Sapphire</p> <p>Donation Amount: \$501 - \$1,000</p> <p>PERKS : Website Listing (WL) Program Listing (PL) Ticket Discount 10% Tuition Discount 15%</p> <p>Donate Here</p>	<p>Donation Tier: Diamond</p> <p>Donation Amount: \$1,001 - \$2,500</p> <p>PERKS : Website Listing (WL) Program Listing (PL) Ticket Discount 15% Tuition Discount 20% Free ACT T-Shirt</p> <p>Donate Here</p>
--	--	---	---	---

Corporate Sponsorships

<p>Donation Tier: Patron</p> <p>Donation Amount: \$150 - \$250</p> <p>PERKS : - Recognition in Shows Programs</p> <p>Donate Here</p>	<p>Donation Tier: Actor</p> <p>Donation Amount: \$251 - \$500</p> <p>PERKS : - Recognition in Shows Programs - Listed on ACT Website (Text Only in corporate sponsorships.)</p> <p>Donate Here</p>	<p>Donation Tier: Techie</p> <p>Donation Amount: \$501 - \$750</p> <p>PERKS : - Recognition in Shows Programs - Listed on ACT Website (Text Only in corporate sponsorships.) - Ad placed in our Program Quarter size (4"x2" (400x200px))</p> <p>Donate Here</p>	<p>Donation Tier: Director</p> <p>Donation Amount: \$751 - \$1,000</p> <p>PERKS : - Recognition in Shows Programs - Listed on ACT Website (Text Only in corporate sponsorships.) - Ad placed in our Program Half Page size (4"x3-3" (400 x 350px)) - Ad placed on our Website with Link</p> <p>Donate Here</p>	<p>Donation Tier: Producer</p> <p>Donation Amount: \$1,000 - \$2,500</p> <p>PERKS : - Recognition in Shows Programs - Listed on ACT Website (Text Only in corporate sponsorships.) - Ad placed in our Program Full Page size (4"x8" (400 x 800px)) - Ad placed on our Website with Link - News Letter Access</p> <p>Donate Here</p>	<p>Donation Tier: Executive</p> <p>Donation Amount: \$2,500 - \$5,000</p> <p>PERKS : - Recognition in Shows Programs - Listed on ACT Website (Text Only in corporate sponsorships.) - Ad placed in our Program Full Page size (4"x8" (400 x 800px)) - Ad placed on our Website with Link - News Letter Access - Product Placement in a Show</p> <p>Donate Here</p>
--	--	---	--	---	--

FLEXPASS

ACT Flexpasses and Golden Tickets are great ways to save at the box office! Discounts up to 30%.

WHO'S WHO



Jocelyn Isais (Sounds/Lights) Jocelyn is thrilled to be a part of her first production with ACT! An IT person by day, she was curious to explore the tech used in theater and ACT was nice enough to allow her to touch buttons. Jocelyn has been a part of other productions such as Clue!, The Glass Menagerie, and Fiddler on The Roof with the Greenville Theatre but found ACT closer to home. She'd like to thank her girlfriend and two kitty kids for always supporting her dreams. Thanks for coming and enjoy the show. Fins up!

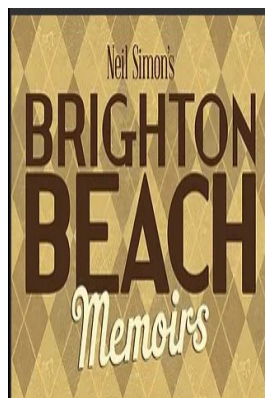
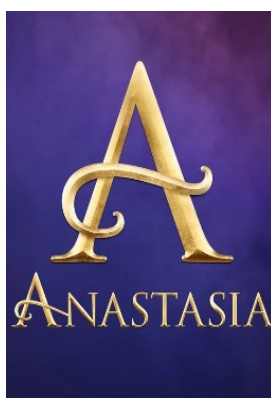
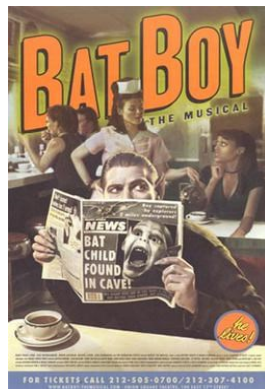
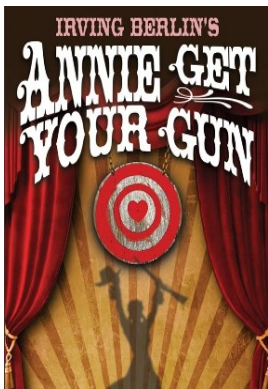


Sam Baker (Director) It is my distinct honor and privilege to have such a talented and enthusiastic cast and crew with which to work. Each and every person has stepped up to the challenge of making this show fun, exciting, and a first class production for our audience. Jimmy's catalogue of songs has been the soundtrack for most of my adult life, and as a performing musician, an integral to my musical shows. This show, however, has brought it all together for me and I can't thank everyone involved enough for their tireless efforts.



Rosalinda M. Valenzuela, Ph.D (Crew) This is Rosalinda's first time as crew in a play. She is very happy to move stuff around and be invisible for others for the first time. She hopes she can master invisibility and make it her super power so may sneak out of boring meetings. When she is not at the theater, she is a Political Science Professor. She would like to thank her family, friends, and pets who make her life enjoyable and fascinating! She thanks Sam, the director, for giving her the opportunity to develop a new

COMING SOON
TO YOUR ACT MAIN STAGE!



VIEW OUR SEASON:

WWW.ARTCENTRETHEATRE.COM/FULLSEASON

Who's Who



Miki Nakamoto (Crew)

Miki is so eager that you came to see the show! Her favorite roles are “Jemilla” in Firebrings, “Wells” in Freaky Friday, and “Pearl Krabs” in SpongeBob the Musical. Beyond the stage, she finds solace in tawkwondo, ice skating, and learning. Miki thanks everyone that worked on the show. Stick back, relax, and enjoy the show!